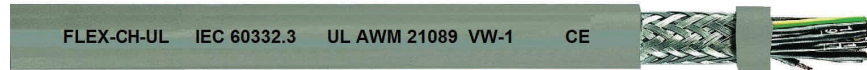


FLEX-CH-UL UL/CE/VW-1



FLEX-CH-UL is a low smoke, zero halogen, cost effective, flexible, overall shielded, multi-conductor power and control cable designed for use in all electrical equipment in dry and damp conditions. Especially designed for the North American market by carrying UL AWM style 21089 & 10701 and rated UL 1581 VW-1. For use in flexible or stationary applications under medium mechanical stress with free movement without any tensile stress, loads or forced movements. Common applications include connections to machinery, data processing, production lines, conveyor belts, ventilation and air-conditioning systems. Found in public facilities, airports, railway stations, plant construction, steel mills, offices and in areas exposed to high risk of flame or fires. The flame retardant, halogen-free jacket gives off no corrosive gases and low smoke when exposed to fire, making **FLEX-CH-UL** suitable in areas of high risk or potential for fire. The overall tinned copper braid is recommended where there is electrical interference, distorted signals or EMI emissions. The common inner jacket is replaced by a plastic foil separator giving this cable a reduced diameter, bending radius and weight. Outdoor installation is not permitted.



Construction:

- Fine bare copper strands
- Strands to VDE-0295 Class-5, IEC 60228 CI-5
- Halogen-Free core insulation
- Color code VDE-0293 - black & numbered
- Plastic foil separator
- 85% Tinned Copper Braid
- Halogen-free outer jacket - gray (RAL 7001)
- "OZ" denotes no ground wire
- **Low oil & chemical resistant**

Technical:

- Working voltage: 300/500 (600V UL)
- Test voltage: 3000 volts
- Flexing bending radius: 15 x Ø
- Static bending radius: 4 x Ø
- Flexing temp: -15° C to +70° C
- Static temp: -40° C to +70° C
- Flame retardant: **IEC 60332.3, VW-1**
- Insulation resistance: 20 MΩ x km

Approvals:

- UL AWM 10701
- UL AWM 21089
- UL 1581 VW-1
- VDE-0281 Part 14
- CE Low Voltage Directive 73/23/EEC and 93/68/EEC
- ROHS compliant

PART NUMBER	CORES	NOMINAL OD	CU LBS/MFT	WT LBS/MFT
21 AWG (16/32) 0,50mm2				
1892102 OZ	2	0.228" / 5.8mm	24	34
1892103	3	0.240" / 6.1mm	29	41
1892104	4	0.356" / 6.5mm	33	48
1892105	5	0.276" / 7.0mm	38	57
1892107	7	0.299" / 7.6mm	46	69
1892112	12	0.390" / 9.9mm	70	111
1892118	18	0.457" / 11.6mm	95	158
1892125	25	0.535" / 13.6mm	150	217
19 AWG (24/32) 0,75mm2				
1891902 OZ	2	0.244" / 6.2mm	29	40
1891903	3	0.256" / 6.5mm	35	52
1891904	4	0.276" / 7.0mm	41	58
1891905	5	0.303" / 7.7mm	48	71
1891907	7	0.327" / 8.3mm	60	87
1891912	12	0.429" / 10.9mm	93	142
1891918	18	0.500" / 12.7mm	142	206
1891925	25	0.591" / 15.0mm	188	277
18 AWG (32/32) 1,00mm2				
1891802 OZ	2	0.256" / 6.5mm	34	53
1891803	3	0.268" / 6.8mm	42	59
1891804	4	0.291" / 7.4mm	50	71
1891805	5	0.319" / 8.1mm	59	83
1891807	7	0.346" / 8.8mm	75	104
1891812	12	0.453" / 11.5mm	124	168
1891818	18	0.543" / 13.8mm	180	247
1891825	25	0.634" / 16.1mm	237	331
16 AWG (30/30) 1,50mm2				
1891602 OZ	2	0.280" / 7.1mm	44	61
1891603	3	0.295" / 7.5mm	55	75
1891604	4	0.323" / 8.2mm	67	95
1891605	5	0.350" / 8.9mm	80	108

Sizes continued on next page.

FLEX-CH-UL UL/CE/VW-1



FLEX-CH-UL Sizes Continued. (16 AWG and Larger)

PART NUMBER	CORES	NOMINAL OD	CU LBS/MFT	WT LBS/MFT
16 AWG (30/30) 1,50mm² Cont.				
1891607	7	0.390" / 9.9mm	103	138
1891612	12	0.512" / 13.0mm	180	238
1891618	18	0.610" / 15.5mm	250	347
1891625	25	0.713" / 18.1mm	355	473
14 AWG (50/30) 2,50mm²				
1891402	2	0.327" / 8.3mm	64	85
1891403	3	0.354" / 9.0mm	79	105
1891404	4	0.390" / 9.9mm	99	135
1891405	5	0.433" / 11.0mm	118	166
1891407	7	0.469" / 11.9mm	170	210
1891412	12	0.626" / 15.9mm	258	351
12 AWG (56/28) 4,00mm²				
1891203	3	0.421" / 10.7mm	119	155
1891204	4	0.461" / 11.7mm	166	195
1891205	5	0.508" / 12.9mm	180	242
1891207	7	0.559" / 14.2mm	249	314
10 AWG (84/28) 6,00mm²				
1891003	3	0.492" / 12.5mm	161	213
1891004	4	0.547" / 13.9mm	230	293
1891005	5	0.606" / 15.4mm	296	342
1891007	7	0.665" / 16.9mm	342	444
8 AWG (80/26) 10,0mm²				
1890804	4	0.685" / 17.4mm	359	459
1890805	5	0.768" / 19.5mm	397	553
1890807	7	0.846" / 21.5mm	550	716
6 AWG (128/26) 16,0mm²				
1890604	4	0.795" / 20.2mm	494	695
1890605	5	0.890" / 22.6mm	600	862
4 AWG (200/26) 25,0mm²				
1890404	4	0.988" / 25.1mm	757	1115
1890405	5	1.102" / 28.0mm	939	1325
2 AWG (280/26) 35,0mm²				
1890204	4	1.118" / 28.4mm	1037	1376
1890205	5	1.248" / 31.7mm	1282	1704
1 AWG (400/26) 50,0mm²				
1890104	4	1.339" / 34.0mm	1447	1937
2/0 AWG (356/24) 70,0mm²				
1892104	4	1.626" / 41.3mm	2025	3312

* Additional sizes may be available.

Flexible Control Cables