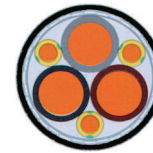
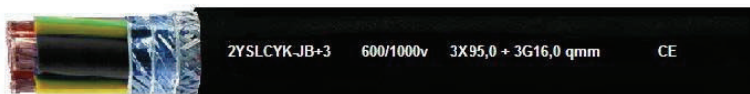


2YSLCYK-JB+3 Symmetrical Grounds

2YSLCYK-JB+3 is a double shielded, large gauge size, PVC motor supply cable. Polyethylene insulation over very fine stranded copper provides a low-loss transfer of power, excellent low capacitance performance and superior flexibility when compared to conventional PVC cables. **2YSLCYK-JB+3** applications include frequency converters, motor runs, connections with high electromagnetic interference. Found in the automotive, paper and food industry, environmental technology, packaging industry, machine tools and handling equipment. The overall foil and braid shield offer excellent protection against electromagnetic and electrical interferences. This version substitutes the common single green/yellow ground wire for three (3) symmetrical green/yellow ground wires for improved EMC characteristics. For medium mechanical stresses found indoors in dry, moist and wet areas. The black UV-resistant jacket allows for outdoor use and for direct burial applications.



Construction:

- Fine bare copper strands
- Strands to VDE-0295 class.5, IEC 60228 Cl-5
- Special polyethylene (PE) core insulation
- Color code VDE-0293-308 (HD 308 S2)
- Three (3) symmetrical green/yellow grounds
- Aluminum foil wrapping over cores
- 85% tinned copper braid shield
- Special black PVC outer jacket (RAL 9005)
- UV-resistant and direct burial approved
- **Extremely oil & chemical resistant**

Technical:

- Working voltage: 600/1000 volts
- Test power voltage: 4000 volts
- Flexing bending radius: 15 x Ø
- Static bending radius: 4 x Ø
- Flexing temp range: -5° C to +70° C
- Static temp range: -40° C to +70° C
- Flame retardant: IEC 60332.1-2
- Insulation resistance: 200 MΩ x km

Approvals:

- adapted to VDE 0250 & 0281
- EMC to EN 55011
- EMC to VDE-0875 part-11
- CE Low Voltage Directive 73/23/EEC and 93/68/EEC
- ROHS compliant

PART NUMBER	CORES	GRND x 3	NOMINAL OD	CU LBS/MFT	LBS/MFT	AMPS
16 AWG (30/30) 1,50mm2 9031603	3	24 AWG	0.402" / 10.2mm	58	111	18
14 AWG (50/30) 2,50mm2 9031403	3	20 AWG	0.449" / 11.4mm	97	148	26
12 AWG (56/28) 4,00mm2 9031203	3	18 AWG	0.512" / 13.0mm	150	215	34
10 AWG (84/28) 6,0mm2 9031003	3	17 AWG	0.591" / 15.0mm	200	282	44
8 AWG (80/26) 10,0mm2 9030803	3	16 AWG	0.724" / 18.4mm	343	429	61
6 AWG (128/26) 16,0mm2 9030603	3	14 AWG	0.850" / 21.6mm	504	569	82
4 AWG (200/26) 25,0mm2 9030403	3	12 AWG	0.996" / 25.3mm	808	939	108
2 AWG (280/26) 35,0mm2 9030203	3	10 AWG	1.094" / 27.8mm	1030	1152	135
1 AWG (400/26) 50,0mm2 9030103	3	8 AWG	1.283" / 32.6mm	1446	1570	168
2/0 AWG (356/24) 70,0mm2 9032103	3	8 AWG	1.535" / 39.0mm	1999	2128	207
3/0 AWG (485/24) 95,0mm2 9033103	3	6 AWG	1.744" / 44.3mm	2651	2792	250
4/0 AWG (614/24) 120,0mm2 9034103	3	6 AWG	1.843" / 46.8mm	3358	3523	292
300 MCM (765/24) 150,0mm2 9033003	3	4 AWG	2.106" / 53.5mm	4110	4313	335
350 MCM (944/24) 185,0mm2 9033503	3	2 AWG	2.343" / 59.5mm	5030	5594	382
500 MCM (1225/24) 240,0mm2 9035003	3	1 AWG	2.567" / 65.2mm	7388	8216	—